

Sliding Door Operator SD-60/90 Ver. 2020

Specification

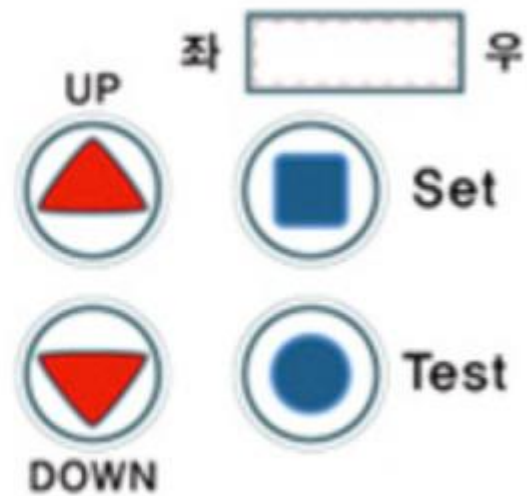
	SWICO SD 60	SWICO SD 90
Motor	High power DC 60W	High power DC 90W
Maximum door leaf (single)	120kg	150kg
Maximum door leaf (bi-parting)	100kg x 2	130kg x 2
Controller	Intelligent Micro Computer with LCD display	
Power supply	180 ~ 220 VAC 50/60 Hz	
Rail base dimension (H x D)	142 mm x 110 mm	
Opening/closing speed	200 – 800 mm/s	
Manual opening/closing force	< 30N	
Hold open time	0.5 – 13s (adjustable)	

Controller

- LCD Display
- Micro Processor
- Switching Power
- Network control system (optional)
- Error check

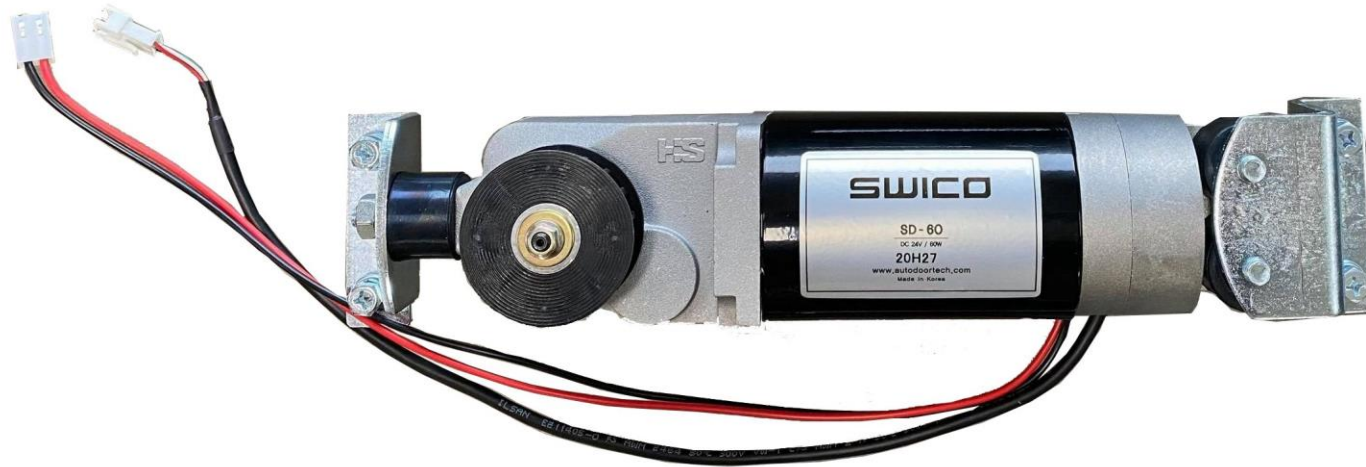


Controller



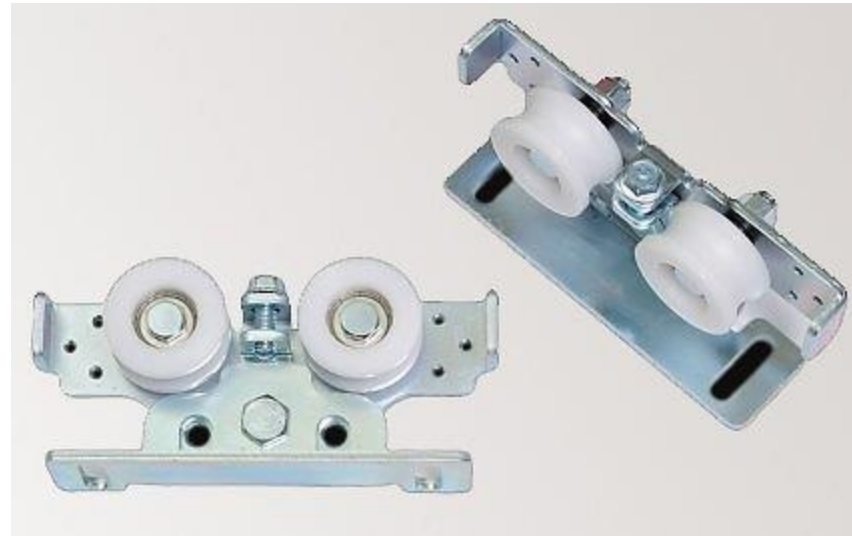
Motor

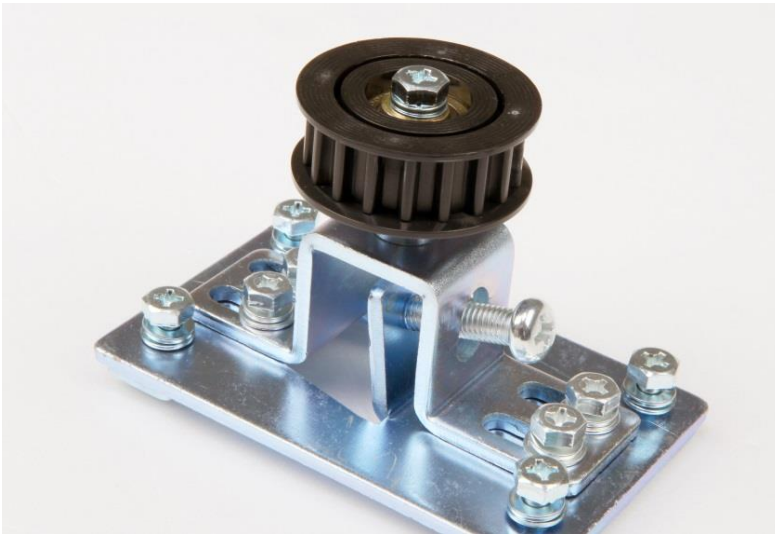
- DC 24V 60W/90W
- Power torque
- Silence geared reducer
- Long endurance



Hanger

- Dual rollers
- Rotary type
- Easy to Adjust height



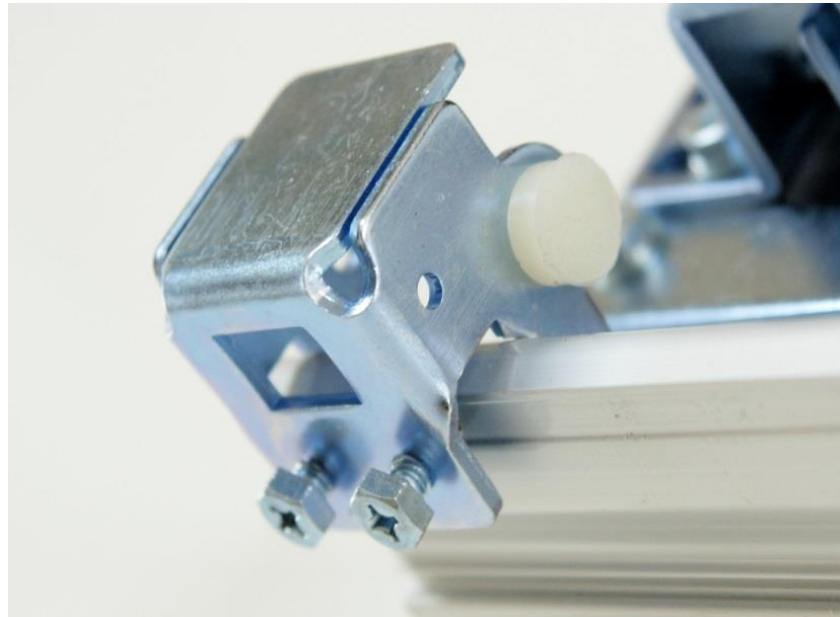


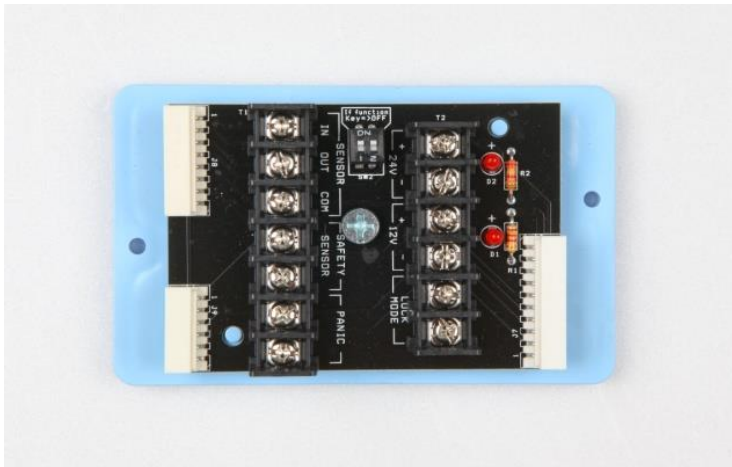
Idler Pulley

- Adjust Tension
- Easy Install
- Timing Belt Pulley

Stopper

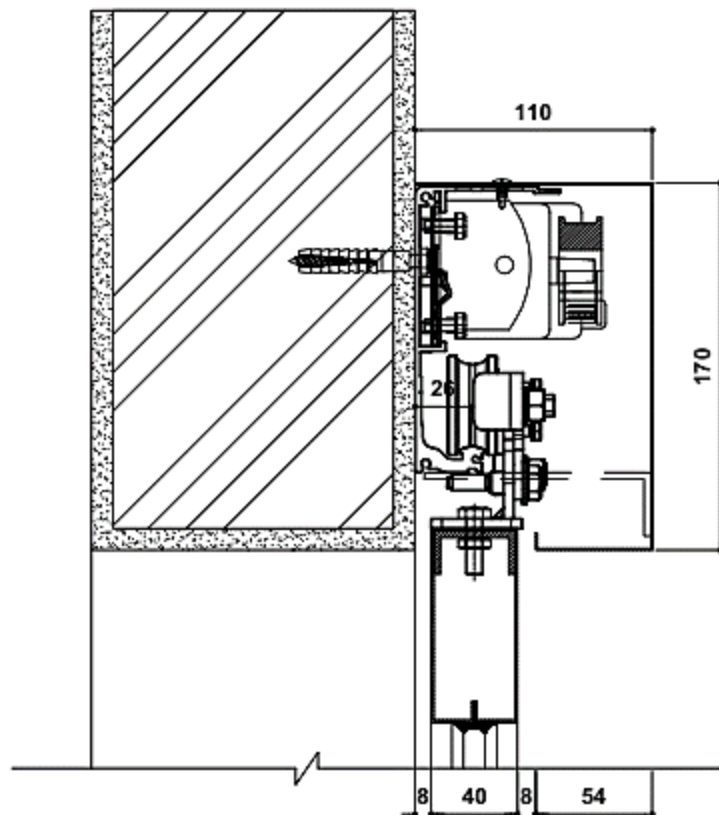
- Fix with two bolt
- Rubber cushion
- With Power Switch



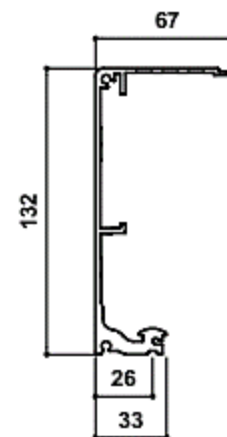


Terminal board

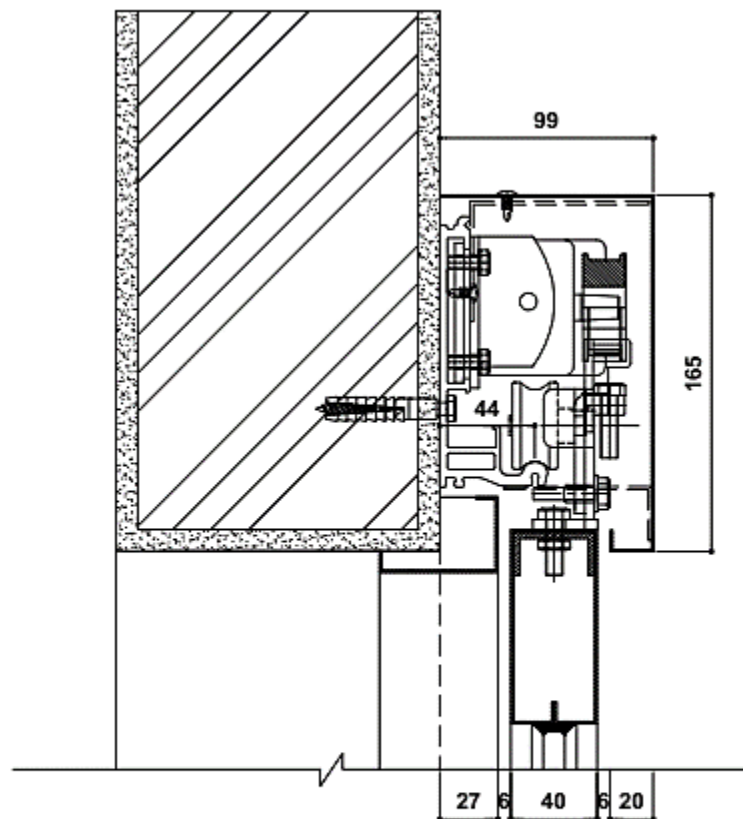
- DC12V, DC24V(Lamp)
- easy to connect with control
- In/Out sensor input
- Safety Sensor input



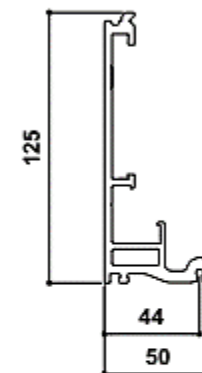
SWICO - S RAIL BASE



SWICO - S RAIL



SWICO - N RAIL BASE



SWICO - N RAIL



Name of Company

SWICO Co. Ltd.

Field of Business

Design, Manufacturing, Install of Automatic door operator

Address

102, Singok-ro, Gochon-eup, Gimpo-si,
Gyeonggi-do, Korea (ZIP 415-811)

Tel

82-31-985-1999

Fax

82-31-985-2333